

Enjoy the luxury, peace and quiet of One Meru double- storey link bungalows. Our homes are designed to be environmentally conscious, yet elegance and taste is never sacrificed. The classy yet minimalist facade design stands out against a breath taking backdrop of the surrounding greenery.

Imagine stepping out from your home to be greeted by the soft morning breeze and serenity of natural sceneries, every day.



## 2 Storey Link Bungalow

- 5 Bedrooms
- 1 Utility Room
- 6 Bathrooms
- Wet & Dry Kitchen

16 units

Standard lot  
45' x 85'

Selling price from  
RM777,000.00  
7% discount for bumiputra lot

# DOUBLE STOREY LINK BUNGALOWS YOUR DREAM HOME



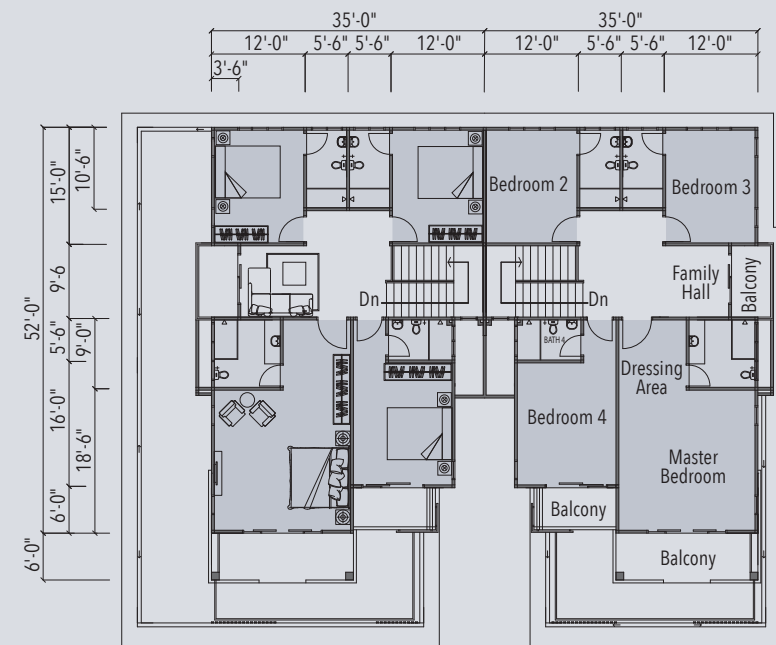




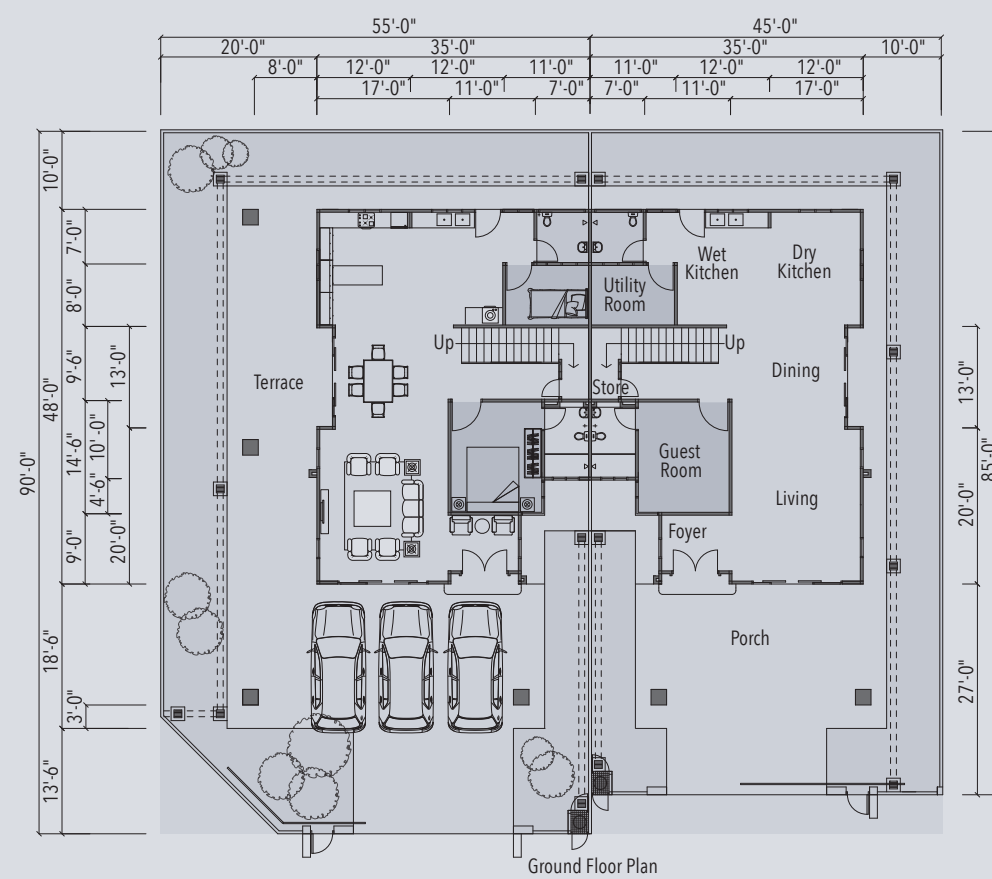


# Link Bungalow

2 Storey Link Bungalow  
Standard lot : 45' x 85'



First Floor Plan



Ground Floor Plan



ONE MERU USES ONLY THE  
FINEST AND MOST TRUSTED BRANDS  
FOR YOUR HOMES.

We use  
Johnson Suisse bathroom solutions  
for added aesthetics and functionality,  
GCI clay roof tiles & Feruni Ceramiche tiles for  
durability and Nippon paint for the finest finishes.







Specification

2 Storey Bungalow

STRUCTURE	: Reinforced concrete frame		
WALLS	: Quality clay bricks with cement plaster		
ROOFING	: Quality GCI clay roof tiles on galvanised steel roof trusses / R.C. flat roof		
CEILING	: Ground Floor - Fibrous plaster ceiling/ skim coat 1st Floor - Fibrous plaster ceiling / skim coat Car porch & Terrace - Fibrous plaster ceiling All bathrooms - Fibrous plaster ceiling Roof eave - Non asbestos flat sheet		
WINDOWS	Front /side Rear	- Aluminium casement c/w tinted glass - Aluminium casement c/w tinted glass	
DOORS	: Door frame Main entrance	- Metal door frame - Decorative solid timber door, aluminium sliding c/w tinted glass	
	Bedrooms Bathrooms Utility, bath & wc Rear	- Moulded timber door - Moulded timber door - PVC door - Metal door	
FLOOR FINISHES	: Living/dining & dry kitchen All bedrooms Wet kitchen First floor Staircase Driveway/car porch/terrace Balcony	- 600 x 600mm ceramic tiles - 500 x 500mm ceramic tiles - 600 x 600mm ceramic tiles - 500 x 500mm ceramic tiles - Ceramic tiles - Ceramic tiles - Ceramic tiles	
WALL FINISHES	: Bathrooms Wet kitchen Others	- Ceramic wall tiles to ceiling height - Ceramic wall tiles to ceiling height - Skim coat & paint	
SANITARY FITTINGS	: Stainless steel double bowl kitchen sink Wash basin Wash basin (Master Bedroom) Sitting W.C. Garden tap Washing machine main pipe with power point Toilet roll holder	- 1 - 5 - 2 - 6 - 2 - 1 - 6	set nos nos nos nos no nos
IRONMONGERY	: Quality Lockset		
ELECTRICAL INSTALLATION	: Lighting points 13 amp power points Fan point Air-cond points T.V. point Telephone point Door bell point Auto gate point Gate light point	- 44 - 18 - 8 - 7 - 2 - 2 - 1 - 1 - 2	nos nos nos nos nos nos no no nos
PAINTING	: Internal External	- Quality emulsion paint - Quality weather shield paint	
GATES & FENCING	: Front perimeter/side perimeter (corner unit) Side/rear perimeter	- Brickwalls / MS grille / MS Sliding gate - Brickwalls	

2 Storey Link Bungalow

STRUCTURE	: Reinforced concrete frame		
WALLS	: Quality clay bricks with cement plaster		
ROOFING	: Quality GCI clay roof tiles on galvanised steel roof trusses / R.C. flat roof		
CEILING	: Ground Floor - Fibrous plaster ceiling / skim coat 1st Floor - Fibrous plaster ceiling / skim coat Car porch & Terrace - Fibrous plaster ceiling All bathrooms - Fibrous plaster ceiling Roof eave - Non asbestos flat sheet		
WINDOWS	Front /side Rear	- Aluminium casement c/w tinted glass - Aluminium casement c/w tinted glass	
DOORS	: Door frame Main entrance	- Metal door frame - Decorative solid timber door, aluminium sliding c/w tinted glass	
	Bedrooms Bathrooms Utility, bath & wc Rear	- Moulded timber door - Moulded timber door - PVC door - Metal door	
FLOOR FINISHES	: Living/dining & dry kitchen All bedrooms Wet kitchen First floor-family hall Staircase Driveway/car porch/terrace Balcony	- 600 x 600mm ceramic tiles - 500 x 500mm ceramic tiles - 600 x 600mm ceramic tiles - 500 x 500mm ceramic tiles - Ceramic tiles - Ceramic tiles - Ceramic tiles	
WALL FINISHES	: Bathrooms Wet kitchen Others	- Ceramic wall tiles to ceiling height - Ceramic wall tiles to ceiling height - Skim coat & paint	
SANITARY FITTINGS	: Stainless steel double bowl kitchen sink Wash basin Sitting W.C. Garden tap Washing machine main pipe with power point Toilet roll holder	- 1 - 6 - 6 - 2 - 1 - 6	set nos nos nos no nos
IRONMONGERY	: Quality Lockset		
ELECTRICAL INSTALLATION	: Lighting points 13 amp power points Fan point Air-cond points T.V. point Telephone point Door bell point Auto gate point Gate light point	- 41 - 16 - 8 - 7 - 2 - 2 - 1 - 1 - 2	nos nos nos nos nos nos no no nos
PAINTING	: Internal External	- Quality emulsion paint - Quality weather shield paint	
GATES & FENCING	: Front perimeter/side perimeter (corner unit) Side/rear perimeter	- Brickwalls / MS grille / MS Sliding gate - Brickwalls	



# BEAUTIFUL HOMES FOR GRACIOUS LIVING



# AT ONE MERU

Choose from our range of specially designed homes, created with you and your family in mind. We have taken into consideration your needs in having a modern, yet comfortable living environment.

Creatively chic, yet spacious and comfortable, our homes incorporate the latest design trends with quality finishing and the best materials. Meticulously designed, masterfully crafted - celebrate an opulent lifestyle.

One Meru semi-detached homes and double storey bungalows incorporates spacious living areas, thoughtful layouts, natural lighting, fresh clean air and wide balconies and frontages - resulting in a tastefully crafted personal sanctuary.

There is no better home for you.



## 2 Storey Bungalow

- 5 Bedrooms
- 1 Utility Room
- 6 Bathrooms
- Wet & Dry Kitchen

Type A 17 units	Type B 1 unit	Type C 1 unit
Standard lot 75' x 90'	Land Area 680.4 sq.m	Land Area 563.1 sq.m
Selling price from RM1,280,000.00 7% discount for bumiputra lot	Selling price RM1,160,000.00 7% discount for bumiputra lot	Selling price RM1,040,000.00 7% discount for bumiputra lot



# SANCTUARY IN THE CITY

Strategically situated on a hill top with fresh billowy breeze, One Meru homes in Bandar Meru Raya is a landmark development that offers you a combination of beauty, convenience, security and sustainability. One Meru homes are driven by a vision to build valuable homes that enhance your living experience.

With its prime location nestled amongst lush greenery and easy access to the city centre and major highways, there is no better place to choose your home. At home, bask in fresh dewy mornings and breezy evenings, amidst the green rolling hills with the birds chirping away.

One Meru - a home like no other.

